



ROTARY CLUB OF CARSON-GARDENA-DOMINGUEZ

@ Millender-McDonald Community Center
3 Civic Plaza Drive
Carson, CA 90745

Phone: (310) 816-8810 Fax: (310) 816-1721

Club Number: 736 Chartered: August 16, 1947

LA RUEDA is published weekly by the Rotary Club of Carson-Gardena-Dominguez, 3 Civic Plaza Drive, Carson, CA 90745.



LA RUEDA

Luncheon Meeting @ Millender-McDonald Community Center

21 January 2009, Issue 3181

CLUB OFFICERS

DAN MEDINAPresident
WALTER NEILPresident Elect
OJ PANDEY Immediate Past President
SCOTT SIMMSTreasurer

CLUB DIRECTORS

CHET CRAFT – Club Service
CARA RICE – Community Service & Webmaster
LARRY YBARRA – International Service
OJ PANDEY – Vocational Service
TOM WILLOUGHBY – Youth Service
BRANDON CARILLO – Foundation Chair
KRISTY BROWNS – Literacy Chair
GLENN MITCHELL, SHERI REPP– Membership Co-Chairs
NEL STINGLEY – Program Chair
MIRIAM GRIER – Social Events Chair
TOM HUSTON & WALTER NEIL – Sergeant at Arms
CHRIS MARK - Secretary & La Rueda Editor

DISTRICT 5280 GOVERNOR CHUCK ANDERSON



ROTARY INTERNATIONAL PRESIDENT D.K. LEE



THE FOUR WAY TEST

Is it the **TRUTH**?
Is it **FAIR** to all concerned?
Will it build **GOODWILL** and **BETTER FRIENDSHIPS**?
Will it be **BENEFICIAL** to all concerned?



ANNOUNCEMENTS

As a reminder, the 11th Annual Chinese Lunar New Year Gala is on February 8th at Empress Pavilion Restaurant, 988 N. Hill Street, Los Angeles Chinatown, 5:00 p.m. reception, 6:00 p.m. dinner. Rotarians, families and friends will welcome the Year of the Ox 4707 with a 10-course traditional Chinese banquet, classical Chinese entertainment - traditional lion dance, acrobats, music, dancers and the rarely seen King of Masks - New Year gifts for everyone and door prizes. Cost is \$55 per adult and \$15 per child 12 & under. Payment must be in by February 1st, so please RSVP to me by January 23rd if you are interested in attending.

As a follow-up to last week's announcement of the District 5280 International Project Trip to Trinidad & Tobago from March 5-9, 2009, here is a partial list of Matching Grants projects planned that are being sponsored by the Rotary Clubs of Beverly Hills, Downey and Inglewood. More Matching Grant Project opportunities are expected to arise.

- Furnishing items in a home for children – sponsored by Downey Rotary and the local Plarco Rotary.
- Furnishing items in children's remedial school – sponsored by Inglewood Rotary, Whitburn Rotary (Scotland) and the local Maraval Rotary.
- Provide a minivan to transport children and their families to a children's cancer facility – sponsored by the Beverly Hills Rotary, Pensacola Rotary (Florida) and the local Port of Spain West rotary.
- A Wheelchair Foundation distribution will be coordinated by the local Felicity/Charlieville Rotary.

In all, 20 clubs in Trinidad will be participating in District 5280's International Project Trip. A fellowship night, similar to international fellowship nights hosted by our local clubs at the LA 2008 RI Convention, will also take place for Rotarians in Trinidad. This is guaranteed to be an evening of fun, fellowship and great memories. If you are interested in traveling on this trip, the deadline for accepting travelers is February 20th and your \$1,400 must be in to the District by this date. Contact Wilson Benitez with any questions at 310.791.6233 or wilsonuni@aol.com.

CALENDAR OF EVENTS

Saturday, January 31

110th Golden Dragon Parade. Meet @ Philippe's, 1001 N. Alameda Street, Los Angeles, 12:15 p.m.

District 5280 Presidents Dinner @ Santa Monica Masonic Center, 926 Santa Monica Blvd., Santa Monica, 5:30 p.m. social, 6:30 p.m. dinner.

Saturday, February 7

Midyear & PrePETS Seminar @ Millender-McDonald Community Center, 801 E. Carson Street, Carson, 8:00 a.m. to 3:00 p.m.

Sunday, February 8

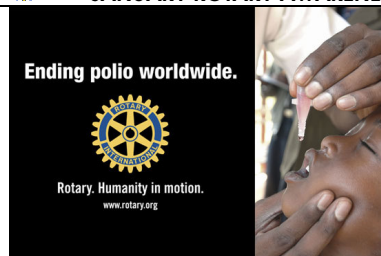
Chinese Lunar New Year Gala @ Empress Pavilion, 988 N. Hill Street, Los Angeles Chinatown, 5:00 p.m.

Friday-Sunday, February 20-22

Southern California/Nevada PETS @ LAX Marriott Hotel, 5585 W. Century Blvd., Los Angeles.



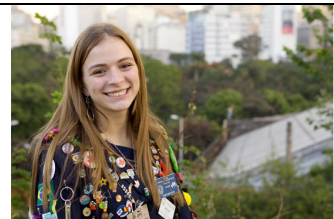
JANUARY ROTARY AWARENESS MONTH PHOTOS



During Rotary Awareness Month in January, let the world know about Rotary through Humanity in Motion PSAs.



Attend the RI Convention in Birmingham, England this year, and you will better understand the diversity and scope of the organization.



Rotary programs for students and youth can change the lives of those who participate. Through these programs, young people can earn scholarships, travel on cultural exchanges, or help a community through a service project.



RI programs and service opportunities help Rotarians become more aware of the needs within both their community and throughout the world.

(Source: www.rotary.org)



THE STATE OF THE FINANCIAL MARKET



From left: Chris Wheeler, Dan Medina and Ray Dean Mize.

Our program speakers today were Ray Dean Mize and Chris Wheeler, Financial Advisors with UBS (Union Bank of Switzerland). UBS is a diversified global financial services company with its main headquarters in Basel & Zurich, Switzerland. UBS employs approximately 80,000 people around the

world and has retail offices in more than 50 countries.

UBS is one of the world's largest managers of private wealth assets with over \$9 billion managed, and is also the second-largest bank in Europe. In Switzerland, UBS is the market leader in retail and commercial banking. UBS has a major presence in the U.S., with its American headquarters located in New York City and Stamford, Connecticut.

Beginning last summer, the U.S. has been hammered by the deterioration of credit and liquidity conditions in the residential mortgage market, especially the subprime portion of that market. As mortgage delinquencies soared, and securities backed with subprime mortgages, widely held by financial firms, lost most of their value. The result has been a large decline in the capital of many banks and government sponsored enterprises, tightening credit around the world.

In response to the liquidity and solvency concerns regarding key financial institutions, the government took action to provide funds to banks to encourage lending to worthy borrowers and to restore faith in the commercial paper markets, which are integral to funding business operations. The government also bailed out key financial institutions, assuming significant additional financial commitments.

The risks to the broader economy created by the housing market downturn and subsequent financial market crisis were primary factors in several decisions by the government to cut interest rate and to implement economic stimulus packages. These actions were designed to stimulate economic growth and inspire confidence in the financial markets.

Effects on global stock markets due to the crisis have been dramatic. Between January 1 and October 2008, owners of stocks in US corporations suffered about \$8 trillion in losses, as their holdings declined in value from \$20 trillion to \$12 trillion. Losses in other countries have average about 40%.

These recent market difficulties have posed a number of challenges for investors. Ray Dean talked about several instruments as financial solutions for a volatile and down market:

- **CD's** – CD's carry a fixed interest rate and are held for a specified length of time. CD's offer safety and often a higher

rate of return than a savings account or money market account. Because CDs are bank deposits, they are insured by the FDIC up to a limit of \$250,000.

- **Blue Chip Stocks** - A "blue chip" is the nickname for a stock that is thought to be safe, in excellent financial shape and firmly entrenched as a leader in its field for the long term. Blue chips generally pay good dividends and are favorably regarded by investors. A few examples of blue chips are Wal-Mart, Coca-Cola, Johnson & Johnson, and BP.

Bonds - A bond is a loan. The loans can be from the federal government, a federal agency, municipality, or corporation. When you purchase bonds you are lending your money to whomever you buy the bonds from. In return for lending them your money you are paid a fixed rate of interest over a set period of time. When the bond matures the investor's money is usually returned with the earned interest included. Current bonds of choice would be corporate bonds, industrial company bonds, and essential services revenue bonds. For now, avoid Treasury bonds, bank bonds, junk bonds, municipal bonds, and California general obligations bonds.

- **Gold** - Of all the precious metals, gold is the most popular as an investment. Investors generally buy gold as a hedge or safe haven against any economic, political, social, or currency-based crises. These crises include investment market declines, inflation, war, and social unrest. Investors also buy gold during times of a bull market to financially gain. You could buy gold itself, buy gold derivatives or buy gold stocks.

In closing, Ray Dean and Chris emphasized good quality, investment grade and very conservative instruments to carry us through these volatile times.



FINE TIME

Fine Master Tom Huston was quick to credit Brandon Carrillo with \$5 for bringing two interesting guests to lunch. I guess the guests actually LISTENED to Tom whereas the others haven't. Christopher Childers was gone the last two weeks. One week was spent with Don Kott who is recovering from pneumonia, and Christopher couldn't remember where he was the second week, which cost him \$5. Jay Mastroianni commented on President Dan Medina's choice of color for his shirt and tie before announcing he was at the doctor's last week. He didn't get fined for that but he was fined \$5 for last week's fully-loaded rum cake. Vickie Wippel was at a business meeting last week - \$5 fine.

Cara Rice and Sheri Repp each received a \$5 credit for the roll-out of the city's new CNG buses. Tom said the buses look big enough and mean enough to go up against Governor Arnold Schwarzenegger's Hummer. Because their credit totaled \$10, Cara and Sheri were challenged with the Fiction & Fact Question for double or nothing. Cara came up with 1/2 of the correct answer, so Tom let them walk away with a wash. Chet Craft didn't get off so easily, incurring a \$5 fine for attempting to slip Cara the answer.

The Secret Greeter today was Tom Willoughby, who was happy to report that everyone greeted him in one fashion or another!



JEOPARDY

Trivia Question: What tennis player was the first ever to be expelled from a professional tennis match?

January 21st in history...

1677 – First medical publication in America - pamphlet on smallpox – published in Boston.

1799 – Edward Jenner's smallpox vaccination is introduced.

1915 - Kiwanis International founded in Detroit.

Trivia Answer: In 1990, John McEnroe became the first tennis player to be expelled from a professional tennis match - the Australian Open - for throwing a tantrum & swearing at an official.

